

UPPER DES PLAINES RIVER INUNDATION MAP

Illinois Department of Natural Resources
Office of Water Resources

US Army Corps of Engineers

Lake County Government

**Depth Legend**

- > 5 Feet
- 3 - 5 Feet
- 2 - 3 Feet
- 1 - 2 Feet
- < 1 Foot



IDNR Office of Water Resources maps the floodplain produced by the National Weather Service river gauge stage by utilizing existing hydraulic model profiles and IDNR topographic elevation models based on LiDAR bare earth. Six river gauges are present for the Upper Des Plaines River: Riverside, River Forest, Des Plaines, Lincolnshire, Gurnee, and Russell. Inundation libraries based on stage readings at each gauge have been created and shown within the mapped area for each gauge.

The Illinois Department of Natural Resources and the State of Illinois make no guarantee, expressed or implied, regarding the accuracy of the data. The Illinois Department of Natural Resources and the State of Illinois shall not be liable for any activity involving this data with regard to lost profits or savings or any other consequential damages; or the fitness for use of the data for a particular purpose; or the installation of the data, its use, or the results obtained.

The Upper Des Plaines River Stage Inundation Mapping Project was completed in cooperation with the US Army Corps of Engineers, Lake County Government and IDNR Office of Water Resources.

CLOSE

Find address or place

**Gauge Section Bookmarks**

Russell
Gurnee
Lincolnshire
Des Plaines
River Forest
Riverside





Zoom in and out using the buttons or the mouse wheel



Pressing the Home button will return to the initial, maximized, view



Click on a Gauge to zoom to the center of the gauge area



Enter an Address to zoom to that location

Gauge Section Bookmarks

Russell
Gurnee
Lincolnshire
Des Plaines
River Forest
Riverside

Click on the X to minimize the bookmarks

Depth Legend

> 5 Feet
3 - 5 Feet
2 - 3 Feet
1 - 2 Feet
< 1 Foot

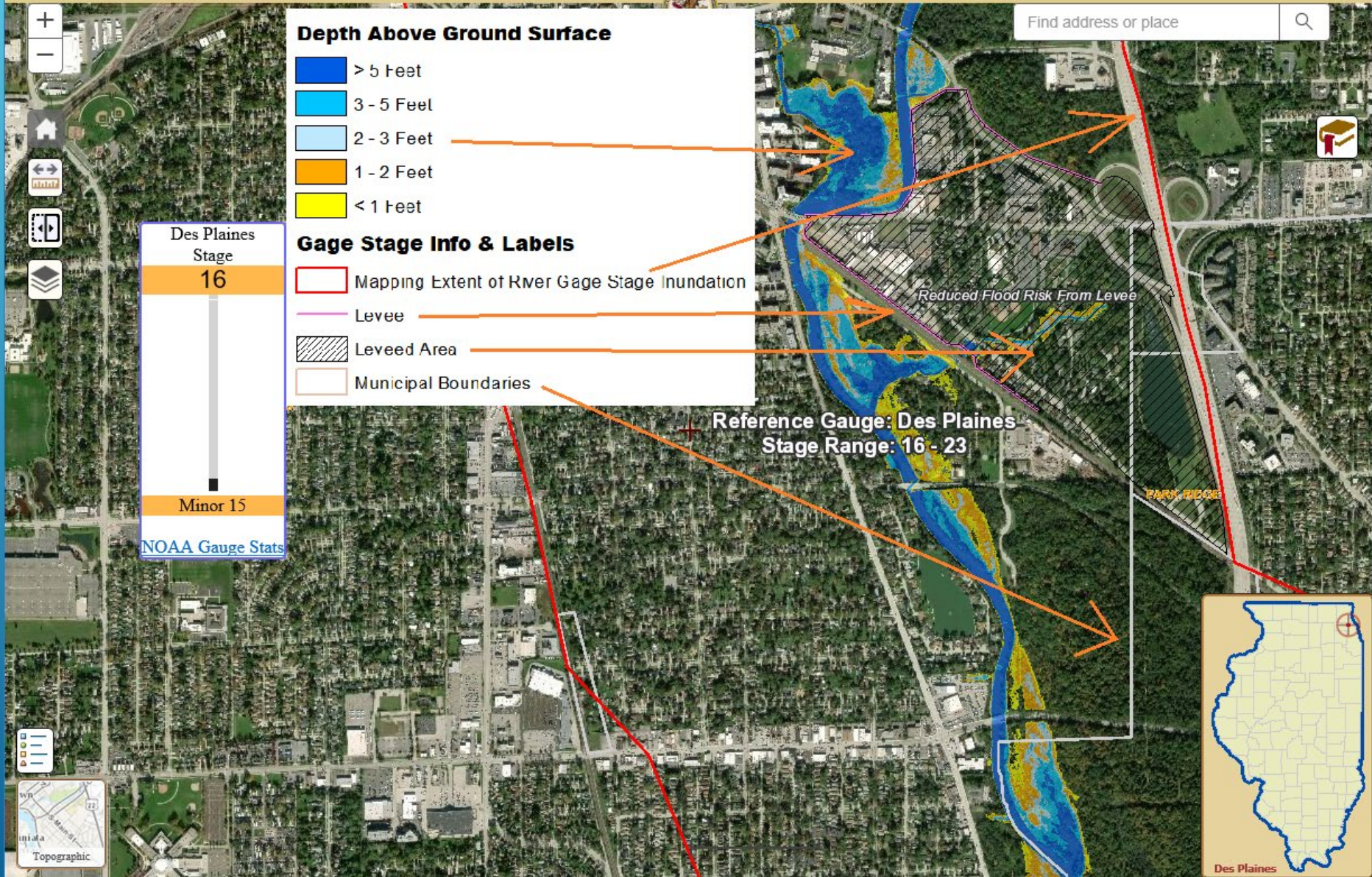
Click anywhere on the legend to minimize it

Pan by holding down the left mouse button and dragging the map



Click on this Map Symbol to toggle the background map from photo to topographic







When zoomed in far enough in a gauge area the stage widget appears

Des Plaines
Stage
18

This is the stage inundation being displayed

**Drag the slider to
the stage you wish
to evaluate**

Moderate 18

**This indicates the
stage category and
the stage it begins**

[NOAA Gauge Stats](#)

Depth Legend

- > 5 Feet
- 3 - 5 Feet
- 2 - 3 Feet
- 1 - 2 Feet
- < 1 Foot



Reference Gauge: Des Plaines
Stage Range: 16 - 23

**A link to the National Weather Service
gauge information is here**

Gauge Section Bookmarks

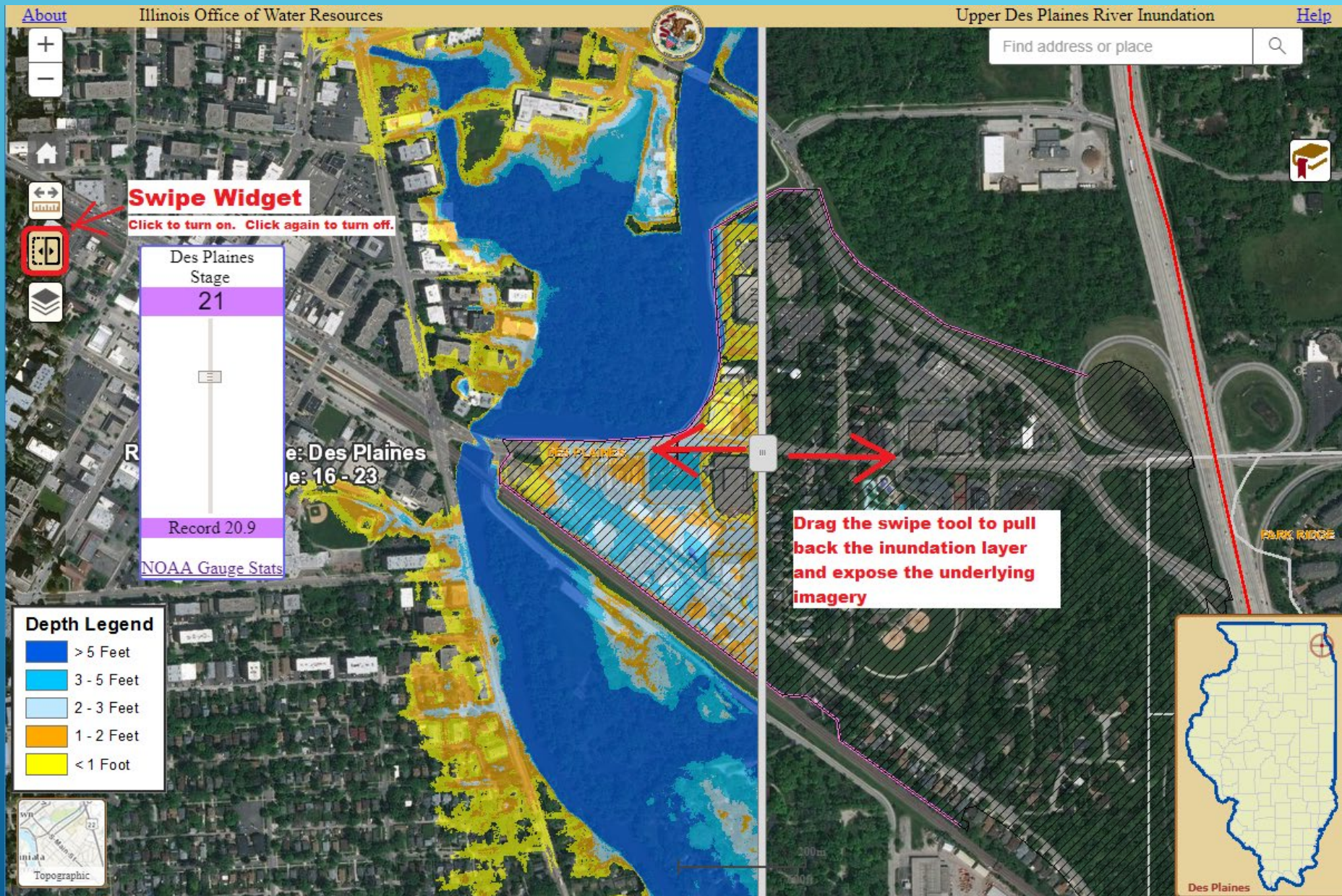
Russell
Gurnee
Lincolnshire
Des Plaines
River Forest
Riverside



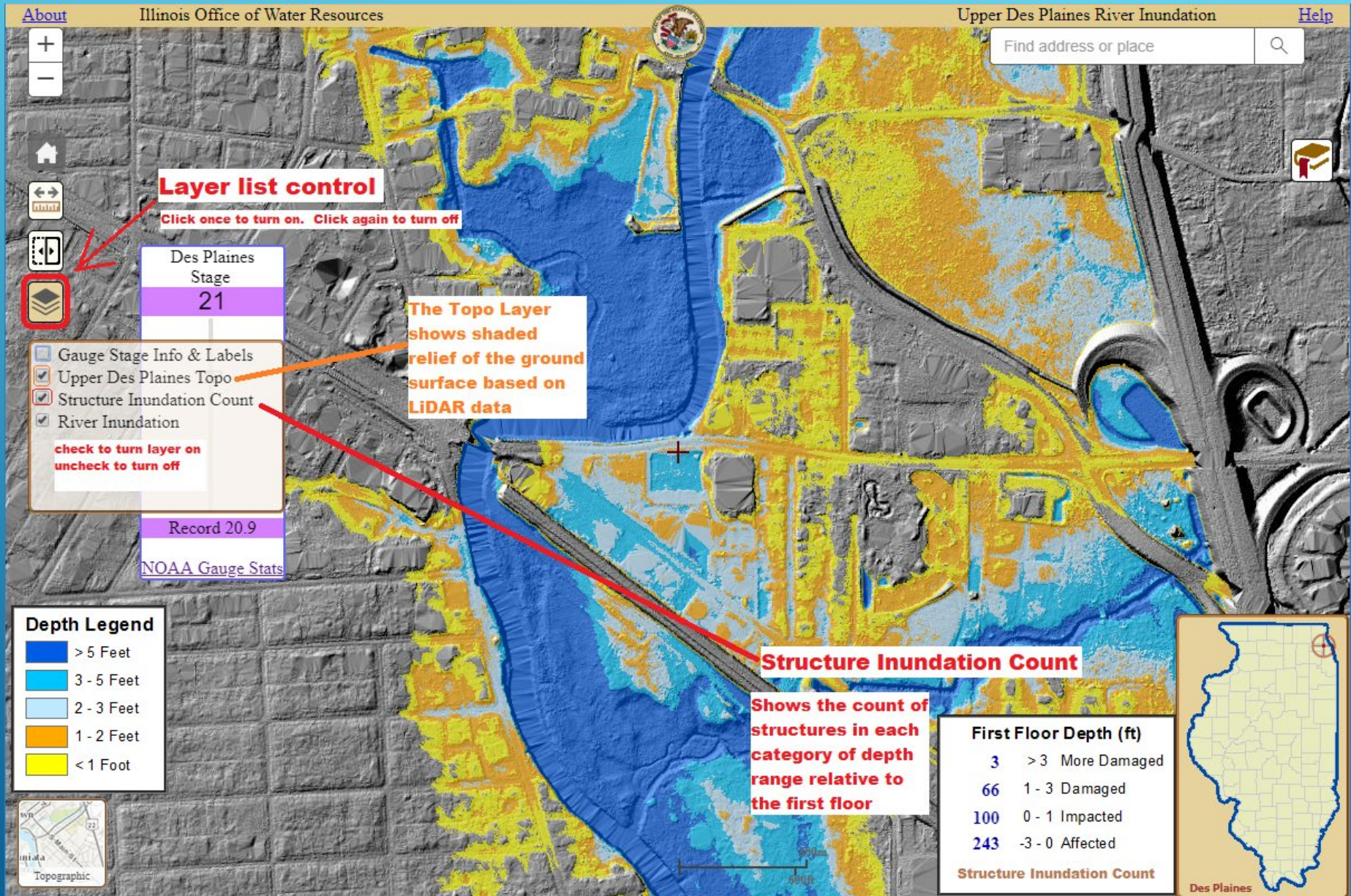
Using the Measure Tool



Using the Swipe Widget



Using the Layer List



- ▶ Please contact the OWR GIS projects supervisor with any questions or comments:

Rita M. Lee, P.E., CFM
Engineering Studies Section Chief
IDNR Office of Water Resources
1 Natural Resources Way
Springfield, IL 62702
Rita.Lee@Illinois.gov
217.524.2387